

The ProteoSep Separation Technique:

The alternative to 1D and 2D gels!

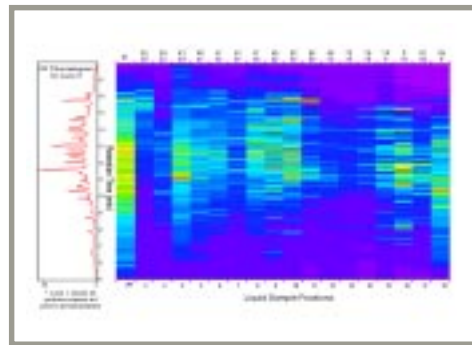
€ All-HPLC technique generating liquid fractions of intact proteins based on protein pI and hydrophobicity.

€ Provides more direct information about post-translational modification of proteins in concert with Mass Spec analysis.

€ Gel-free technique with proven use on all types of whole cell lysates, tissue samples and other complex biological matrices.

€ Technology available in ready-to-use kits or through contract analysis service.

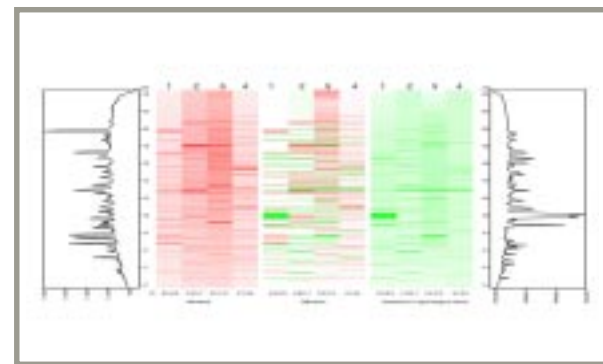
ProteoVue™: Protein Mapping Software



€ Converts UV HPLC or LC/MS data of intact proteins contained in individual liquid pI fractions into easily visualized 2D protein expression maps.

€ Contains easy-to-use functional tools to help researchers efficiently mine proteins of interest for further analysis.

DeltaVue™: Differential Display Software



€ Simultaneously displays comparative and difference maps for expressed proteins in multiple samples.

€ Readily highlights intact proteins undergoing up/down regulation or modification in related samples.